

Annual Report 2018-19



Municipal Committee Jaranwala

Table of Contents

Foreword.....	3
1. Background.....	4
2. Tehsil Jaranwala Map.....	6
3. Functions of Municipal Committee Jaranwala.....	7
4. Municipal Committee Organogram.....	8
5. Administrative Setup.....	9
6. Human resource Available at MC.....	10
7. Annual Budget.....	10
7.1. Development Expenditure.....	11
7.2. Expenditure on O&M of Services and Revenue Generated.....	11
8. Development Projects.....	12
9. Municipal Services Delivery Detail.....	12
9.1. Water Supply System.....	12
9.1.1. Water Supply Hours.....	12
9.1.2. Total Coverage of the City.....	12
9.1.3. Tariff Structure.....	13
9.1.4. Water Filtration Plants:.....	13
9.1.5. The Source of Fresh Water.....	14
9.1.6. Detail of Tube wells.....	14
9.1.7. Manpower Deployed.....	14
9.2. Solid Waste Management.....	15
9.2.1. Solid waste Generation & Disposal.....	15
9.2.2. Equipment & Machinery.....	15
9.2.3. Manpower Deployed.....	15
9.2.4. Coverage Detail.....	16
9.3. Sewerage.....	18
9.3.1. Coverage.....	18
9.3.2. Existing Disposal Works & Pumping Stations.....	19
9.3.3. Sullage Carrier or Open Channels.....	19
9.3.4. Manpower Deployed.....	19
9.3.5. Tariff Structure.....	20
9.3.6. Service Delivery.....	20

9.4. Streetlight.....	20
9.4.1. Street lights Existing Situation:.....	20
9.4.2. Street lights Coverage Map:.....	21
9.4.3. Operation & Maintenance Expenditure:	22
10. Complaint Management.....	22
11. MC Website (www.mcjaranwala.lgpunjab.org.pk)	23
12. MC Response to the Requests of Citizens under RTI Act 2013.....	23
Annex A	25
Annex B	30

Foreword

On behalf of the Municipal Committee Jaranwala, I hereby present this Annual Report for the financial year 2018-19. The report will give our stakeholders and communities an insight into the performance and achievements of the Municipal Committee. The current Annual Report outlines MCs successes and shortcomings in relation to our mandate as provided in the key focus areas of Local Governments. These can be summarized as; Building a Municipal Committee that is efficient, effective and responsive; Strengthen Accountability and promote fairness in its dealings; Accelerating Service Delivery and supporting the vulnerable; Promoting Economic and Social development; Fostering Development Partnerships, Social Cohesion and Community Uplift Programs. It is pertinent to note that these endeavors' can never be successfully achieved on their own but it becomes materialized by the collective efforts of officers, officials and support staff who work together in identifying challenges and to meet those challenges with rigor efforts and earnest professional approach.

It is commendable to note the improvements in relation to our spending and expenditure patterns, but we need to do more. The ever present excuse of lack of resource might be a legitimate one, but the key question is how effectively we use the resources at our disposal to accomplish our goals and attaining set targets. It is clear in this annual report that we are moving in the right direction. It is of paramount importance to synchronize our program plans with quarterly targets to achieve our broader goals effectively and efficiently.

**Administrator
Municipal Committee
Jaranwala**

1. Background

Jaranwala is about 400 years old city. There was a well with big roots hanging in it of an old willow tree. In Punjabi language roots are called "Jaraan" and place is called "Wala". So, these both words combined and formed the shape of a name "Jaranwala". By the passage of time, the place called Jaranwala and later on this name became famous and the city was also called Jaranwala. Existing city was founded by British government in 1908. Mr. Micheal Ferrar, Deputy Commissioner of Faisalabad has inaugurated this town in 1909. Rai Ahmad Khral and Bhagat Singh two famous freedom fighters were sons of historic city of Jaranwala. Mian Abdul Bari a freedom fighter and President of All India Muslim League District Paghwara and Then Lyallpur district was settled in Jaranwala after partition.

Jaranwala Town is the headquarter of the Tehsil Jaranwala under the jurisdiction of Faisalabad district which is located from 30°- 42' to 30°- 47' North latitudes and 72°-40' to 73° to 40' East longitude. The city is located at 31°- 20' North latitude and 73° -25' East longitude. Jaranwala is situated at a distance of 37 kilometers from Faisalabad towards south-east, on Lahore-Faisalabad road and Jaranwala-Khurrianwala road. The Sheikhpura-Shorkot railway line also passes through this city. It is connected by regular bus services with Lahore and Faisalabad.

In 1909 a town was established near the old Abadi and was named after the then British Deputy Commissioner, however, his name could not survive against the old name of Jaranwala. In 1912 Jaranwala was declared as a notified area. It was made a Town Committee in 1924 and became a Municipal Committee in 1935.

Population of the city as per District Census Report 1998 was 106,985 persons with annual growth rate of 2.57% which if projected at this growth rate should be 173,264 persons in year 2017. The census report of year 2017 has not been published by Government of Pakistan as yet. However as per provincial data released by the concerned ministry, the population of the city in the year 2017 was 150,380 persons. The city has extended its inhabitation much beyond the existing municipal limits and as per land scans process performed by PMDFC, the city had population of 244,972 persons in the year 2017. The large disparity in population figures shows that the municipal limits of the city need to be extended by incorporating the newly developed inhabitation as municipal services are to be provided to the entire inhabited areas of the city.

Traditional Crops (Sugarcane, Wheat & Rice)

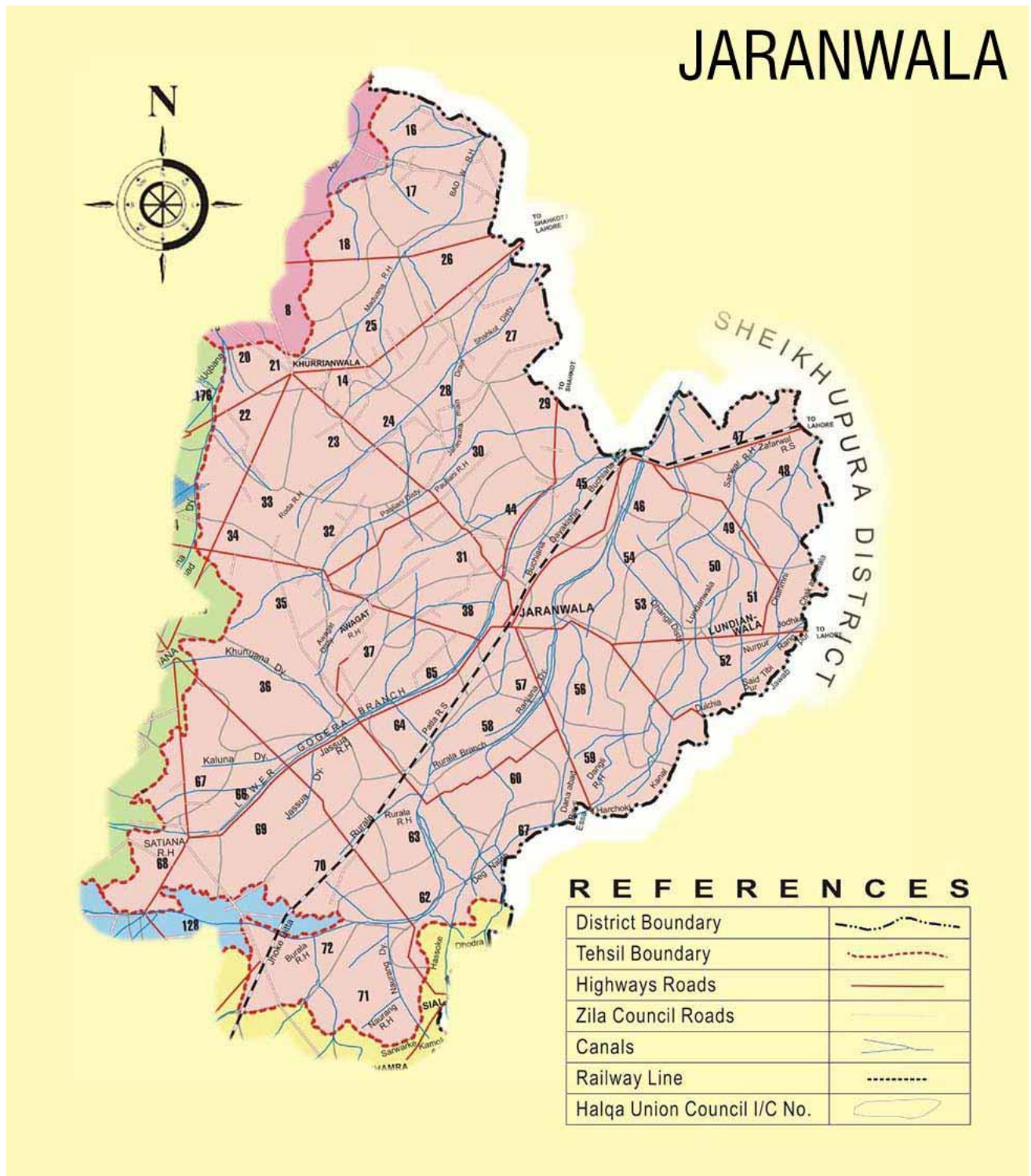
Jaranwala has fertile land with enormous potential in agriculture yield. Major crops in this area are sugarcane, wheat, corn and rice. Jaranwala hosts the 3rd largest jute mill in the world (it is closed now-a-days). The city of Jaranwala shares in growth of Pakistan with sugar, textile, wheat and rice industry.

Economic Activity in the City

With the passage of time major industry have been established in Jaranwala. At present, following industries of have been housed in Jaranwala.

Sr. #	Major Industries
1.	Sugar Mill
2.	Cotton & Textile Mills
3.	Flour Mills
4.	Food Industry
5.	Confectionary
6.	Cotton Ginning & Pressing
7.	Dairy Farms
8.	Rice Processing Units
9.	Agriculture Implements
10.	Ice Factory & Cold Storage
11.	Shoe Manufacturing
12.	Petrol Pumps
13.	C.N.G Stations

2. Tehsil Jaranwala Map



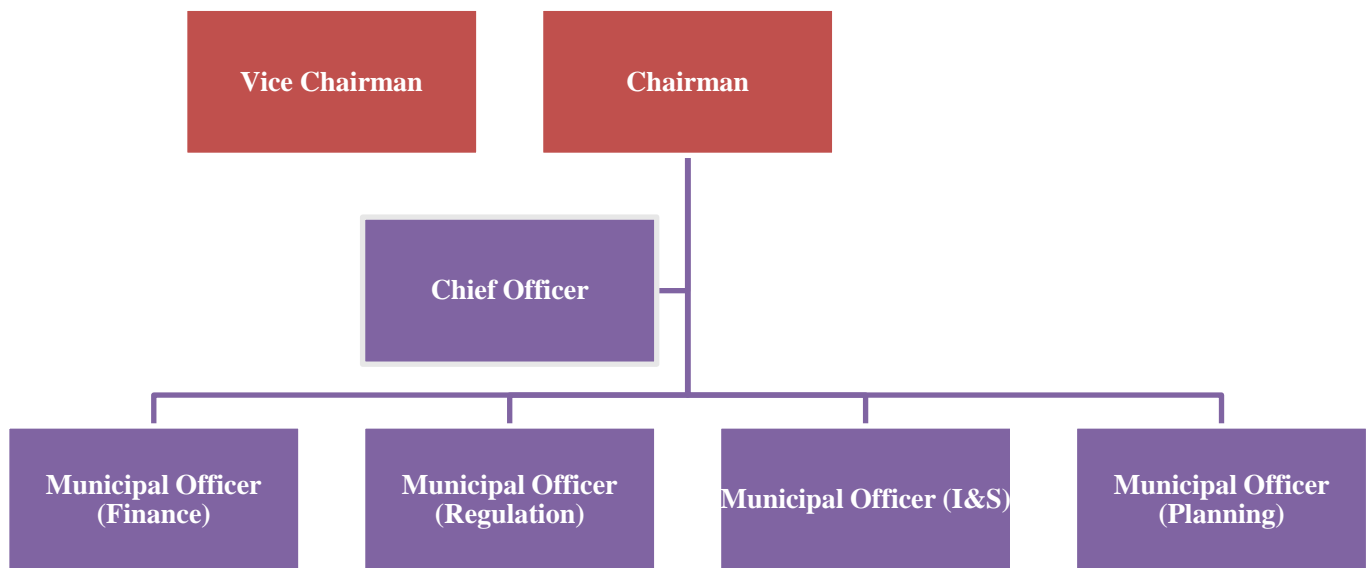
3. Functions of Municipal Committee Jaranwala

Municipal Committee Jaranwala is responsible for performing the following functions as per new PLGA 2019:

- a) Economic and value chain development;
- b) Management of primary, elementary and secondary education facilities;
- c) School enrolment and universal education;
- d) Monitoring and supervision of primary health care facilities;
- e) Preventive health and hygiene;
- f) Population welfare including population control;
- g) Solid waste collection and disposal;
- h) Sewerage collection and disposal including water management and treatment;
- i) Building control and land use;
- j) Births, deaths, marriages and divorce registration;
- k) Museums and art galleries;
- l) Open markets;
- m) Livestock and agriculture markets;
- n) Public parking facilities;
- o) City roads and traffic management;
- p) Public transport;
- q) Abstraction of water for industrial and commercial purposes;
- r) Emergency planning and relief;
- s) Support to provincial agencies in prevention of crime and maintenance of public order; and
- t) Regulatory enforcement in the functions
- u) Establishment and management of pre-schools;
- v) Libraries;
- w) Drinking water supply;
- x) Burials, cremations etc.;
- y) Public conveniences;
- z) Children's services;
- aa) Community safety;

- bb) Arts and recreation;
- cc) Public fairs and ceremonies;
- dd) Sports;
- ee) Environmental health, awareness and services;
- ff) Parks and landscape development;
- gg) Slaughtering of animals;
- hh) Street lights; and
- ii) Sign boards and street advertisements.

4. Municipal Committee Organogram



5. Administrative Setup

<p>Administrator Mr. Zain-ul-Abedin Memon Office No: 041-4313066</p>	 A portrait of Mr. Zain-ul-Abedin Memon, a young man with short dark hair and glasses, wearing a dark blue suit jacket, a white shirt, and an orange tie. He is smiling and looking directly at the camera.
<p>Chief Officer & MO(R) Additional Charge Mr. Muhammad Arif Warriach Office No: 041-4313066</p>	 A portrait of Mr. Muhammad Arif Warriach, a man with a mustache wearing a dark suit jacket over a white shirt. He is sitting at a desk with his hands clasped in front of him.
<p>Municipal Officer (Finance) Mr. Shakeel Ahmad Office No: 041-4313066</p>	 A portrait of Mr. Shakeel Ahmad, a man with a beard and mustache wearing a dark blue shirt and a black vest. He is outdoors, with a body of water and greenery in the background.
<p>Municipal Officer (Infrastructure) Mr. Bilal Ahmad Officer No: 041-4313040</p>	 A portrait of Mr. Bilal Ahmad, a man with a mustache wearing a grey suit jacket over a dark blue shirt. He is sitting at a desk with a green chalkboard in the background.
<p>Municipal Officer (Planning) Ms. Shireen Newton Officer No: 041-4313066</p>	 A portrait of Ms. Shireen Newton, a woman with glasses wearing a green and white patterned shawl. She is looking directly at the camera.

6. Human Resource Available at MC

Vacancy Analysis-Section Wise			
Section	Sanctioned	Filled	Vacant
Chairman	3	3	0
Vice Chairman	3	3	0
Chief Officer	10	8	2
Municipal Officer (R)	10	7	3
Municipal Officer (I)	375	119	256
Municipal Officer (P)	7	4	3
Municipal Officer (F)	15	14	1
Total	423	158	265

MC Schedule of Establishment is attached as Annex – A

7. Annual Budget

Abstract of annual budget of Municipal Committee Jaranwala is as under:

Financial Position				
	Actual 2017 - 2018	Estimated 2018 - 2019	Actual 2018 - 2019	Estimated 2019 - 2020
Opening Balance as on July 1st.	-	-	94,858,010	136,865,065
Income	-	329,206,766	56,575,506	221,613,409
	-	404,271,000	155,494,757	213,573,144
Total Receipts	-	733,477,766	306,928,273	572,051,618
Expenditure	185,349,659	273,260,453	143,338,059	267,250,529
	92,468,410	56,942,500	341,948	119,456,000
	365,866	32,166,043	551,079	23,447,286
Total Expenditure	278,183,935	362,368,996	144,231,086	410,153,815
Closing balance as on June 30th.	278,183,935	371,108,770	162,697,187	161,897,803

The Income & Expenditure Statements are attached as Annex – B

7.1. Development Expenditure

The expenditure incurred on the development projects from year 2013-14 to the current financial year & source of financing is given below:

(All figures in million Rs)

Description	2013-14	2014-15	2015-16	2016-17	2017-18
Expenditure on Development Projects	162.88	258.07	172.35	-	130.0
Source of Financing of Development Projects	Own source revenue				
	ADP grants				
	PFC share				

7.2. Expenditure on O&M of Services and Revenue Generated

The expenditure incurred on the O&M of all municipal services by MC/TMA Jaranwala from year 2013-14 to the current financial year along with revenue recovered from these services and the subsidies injected to operate these services, is given below:

S.N.	Year	2013-14	2014-15	2015-16	2016-17	2017-18
1	<u>Water supply</u>					
	Total O&M cost	8.163	11.89	14.969	8.152	11.04
	Revenue earned	0.18	0.187	0.185	0.118	0.231
	Subsidy injected	7.983	11.703	14.784	8.034	10.8.9
2	<u>Sewerage/drainage</u>					
	Total O&M cost	9.683	16.773	20.646	2.96	16.09
	Revenue earned	0	0	0	0	0
	Subsidy injected	9.683	16.773	20.646	2.96	16.09
	The expenditure in the year 2016-17 is too low and MC could not explain the reason for that.					
3	<u>Solid waste management</u>					
	O&M cost	44.746	46.7	50.37	47.864	51.121
	Revenue earned	0	0	0	0	0
	Subsidy injected	44.746	46.7	50.37	47.864	51.121
4	<u>Parks</u>					
	O&M cost	5.351	6.683	7.692	5.498	7.912

S.N.	Year	2013-14	2014-15	2015-16	2016-17	2017-18
	Revenue earned	0	0	0	0	0
	Subsidy injected	5.351	6.683	7.692	5.498	7.912
5	<u>Street Light</u>					
	Total Expenditure	5.904	8.176	7.69	2.761	8.518
	Revenue earned	0				

8. Development Projects

The Annual Development Plan initiated by Municipal Committee Jaranwala in the current and preceding years is as under:

Summary of ADP Projects				
Sr. No	Financial Year	No. of Total Projects	Approved Cost (Rs. in Million)	Status
1.	2018-19	Nil	Nil	Nil

9. Municipal Services Delivery Detail

9.1. Water Supply System

9.1.1. Water Supply Hours

The inhabitants of MC Jaranwala have their own water sources such as hand pumps or motorized pumps. Due to lack of awareness about potable water, the citizens are extracting contaminated water from the shallow aquifers but on average MC is supplying 02 hours of water to households daily as per given schedule:

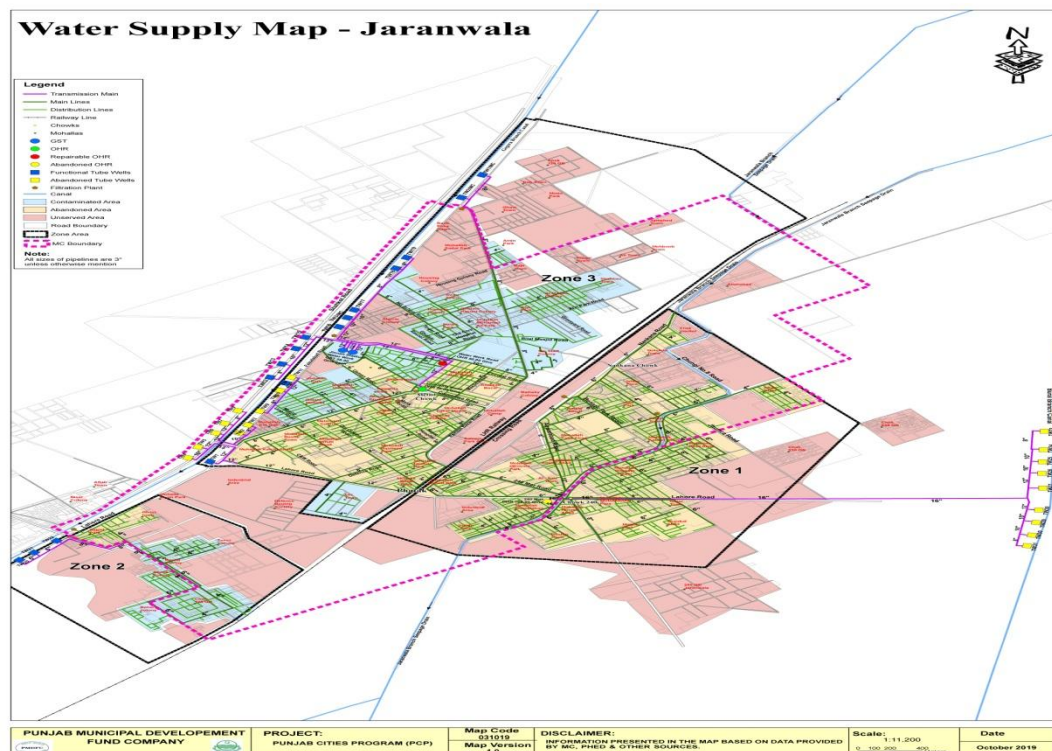
Water Supplied Hours			
Morning	Mid-day	Evening	Total
1	-	1	2.0

9.1.2. Total Coverage of the City

The total area coverage of water supply in the city is 45% fully covered, 33% area is un served, 12% contaminated area while 10% is abandoned area. Rest of the

area is un served. The detail of water connections and percent connected are given as under:

No. of Connections				%age Connected
Domestic	Commercial	Industrial	Total	
1,098	-	-	1,098	3%



9.1.3. Tariff Structure

The consumer connections are not metered and hence water. The water rates are given below:

Tariff Rate/ Month		
Domestic	Commercial	Industrial
Rs.150/-	Rs.200/-	1,000/-

9.1.4. Water Filtration Plants:

The inhabitants have their own water sources such as hand pumps or motorized pumps. Due to lack of awareness about potable water, the citizens are extracting contaminated water from the shallow aquifers. However 07 Nos. of water filtration plants have been

installed in the city for supply of potable water to the citizen and most of the residents are fetching drinking water from these filtration plant.

9.1.5. The Source of Fresh Water

The city has brackish sub soil water which is unfit for human consumption. Gogera Branch Canal (GBC) is flowing at the western periphery of the city and Burala Branch Canal is flowing at the eastern periphery of the city. Both canals have developed fresh water belts along both of the banks because of the seepage of fresh water from the sides and bed of the canals. Skimming tube wells have been installed on the banks of these canals to harness fresh subsoil water from the shallow aquifers being recharged by these canals.

9.1.6. Detail of Tube wells

Water supply area has been divided into three zones however, below mentioned tubewells were installed in the years 2006-08 under a comprehensive water supply system out of which some tubewells were taken over by MC Jaranwala whereas the remaining were not taken over and ultimately abandoned wasting heavy capital. The detail is given below:

Zone	No of tube wells	Taken over by MC	Functional	Not Taken over by MC & Abandoned
1	9	0	0	9
2	3	3	3	0
3	23	13	13	10
Total	35	16	16	19

9.1.7. Manpower Deployed

The manpower deployed on water supply system in MC Jaranwala is given below:

Sanctioned strength	31
Existing strength	17
Vacant posts	14

9.2. Solid Waste Management

9.2.1. Solid waste Generation & Disposal

Currently waste is being dumped openly along the Jaranwala Branch seepage drain near Chack No-128/GB. Because of non-availability of landfill, waste was being dumped along Gogera branch canal which has been abandoned now. The solid waste management efficiency is given below:

Total Waste Generated	98 Tons
Waste Disposal	39.67 Tons
% age Efficiency	40%

9.2.2. Equipment & Machinery

Under mentioned collection and transportation machinery is available with MC to handle the solid waste:

Sr. No.	Equipment/ Machinery	Total available Nos.	In working condition
1.	Tractors	4	4
2.	Trolleys	4	4
3.	Tractor Front End Loader	2	2
4.	Tractor Front End Blade	1	1
5.	Tractor with Bowser	1	1
6.	Sprinkling Lorry	1	1
7.	Mechanical Sweeper	1	-
8.	Hand Cart for Cleanliness	10	10

The existing machinery is neither sufficient nor cost effective and efficient giving rise to low efficiency of collection and disposal of the waste and as a result of that MC is facing higher waste management cost as well as complaints regarding the insanitary conditions in the city. Efficient and cost effective machinery is needed to increase the efficiency of collection and transportation for improving the sanitary conditions and lowering down the operational and maintenance costs.

9.2.3. Manpower Deployed

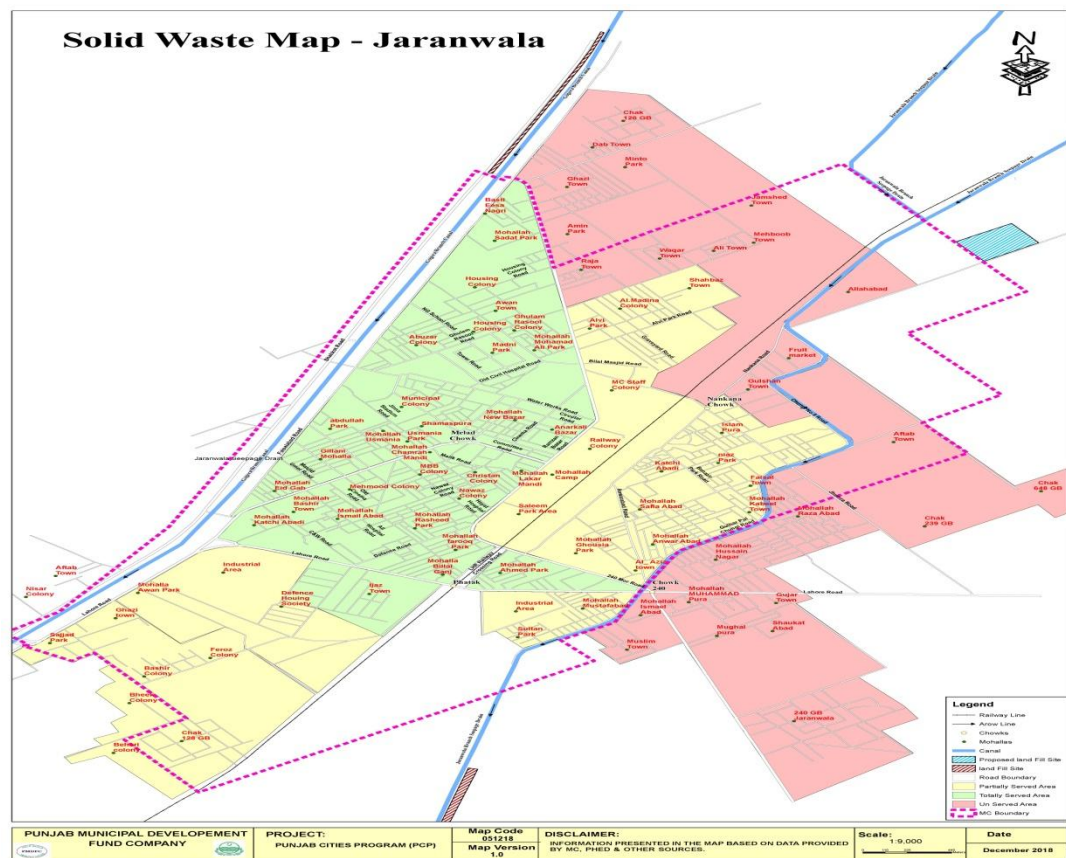
The manpower deployed for collection, transportation and disposal of the solid waste is given in the under given table. As indicated by MC Officers, this manpower is not sufficient to

serve the entire city at the given standards. MC needs additional manpower which is given below. Actual requirement will be identified after detail design and implementation of the project:

Slot	Sanctioned strength	Existing strength	Vacant posts	Manpower on daily wages	Additional MC demand
Sanitary Workers	245	42	203	159	20
Vehicle Drivers	15	5	10	6	5
Supervisors	6	2	4	0	0
Sanitary Inspectors	2	0	2	0	3
Total	268	49	219	165	28

9.2.4. Coverage Detail

The entire city is not served with solid waste collection and disposal. The efficiency of the services is 65% as given below. Most of the areas of the city remain either un-served or these are partially served. The detail of these areas is given blow:



a) Partially Served Areas of City (25% of the city area)

1	Shahbaz Town	2	Al- Madina Colony	3	Alvi Park	4	Mc Staff Colony
5	Railway Colony	6	Mohallah Camp	7	Saleem Park	8	Industrial area west side
9	Defence Housing Society	10	Awan Park	11	Ghazi Town	12	Sajjad Park
13	Feroz Colony	14	Bashir Colony	15	Bheek Colony	16	Behari Colony
17	Chak No-128/GB	18	Industrial Aarea (east side)	19	Mustafabad	20	Sultan Park
21	Al-Aziz town	22	Ghousia Park	23	Anwarabad	24	safia-abad
25	Kabeel town	26	Faisal Town	27	Niaz Park	28	Katchi Abadi
29	Islampura						

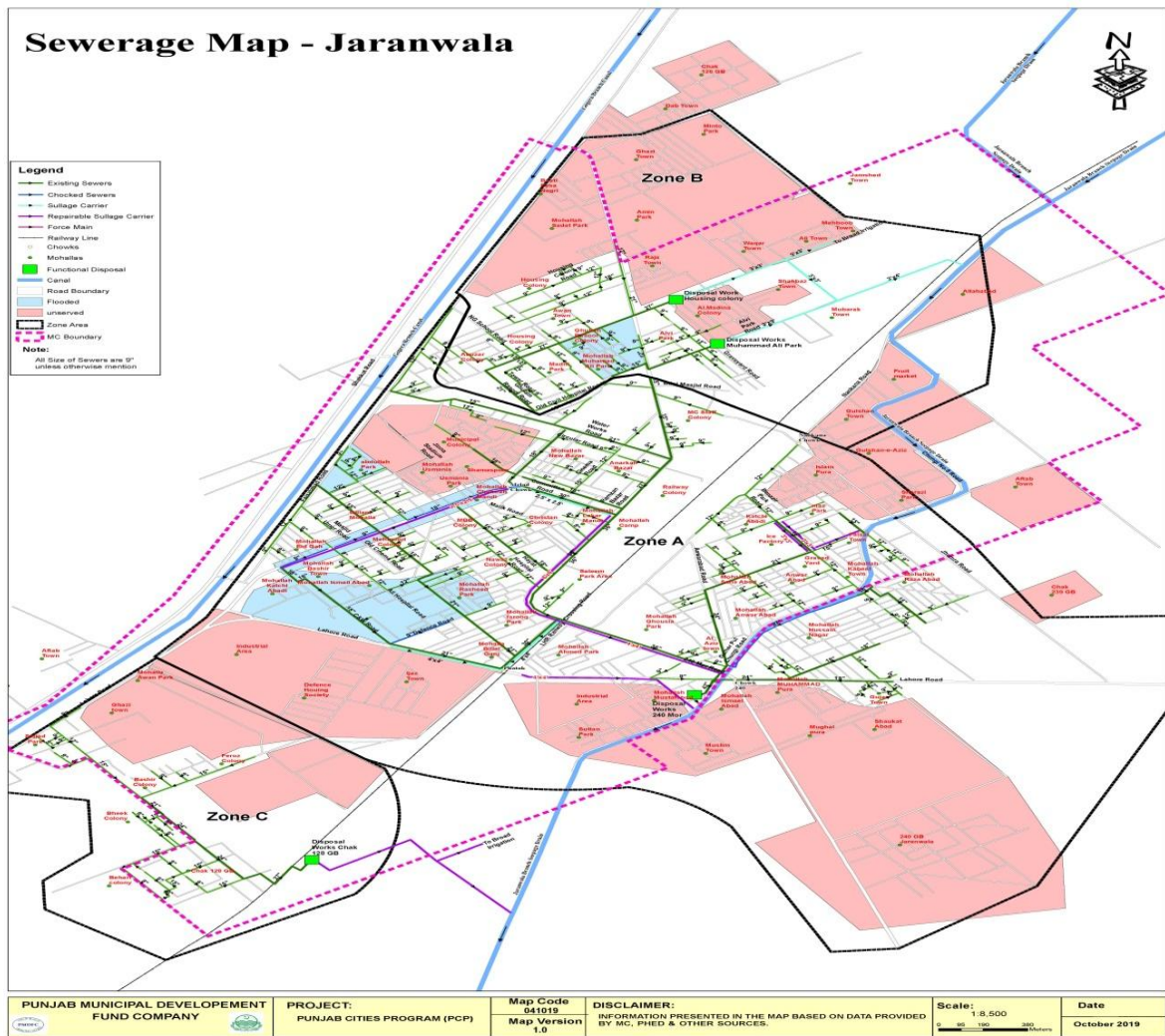
b) Un-Served Areas (30% of the total city area)

1	Chak No-126/GB	2	Dab Town	3	Minto Park	4	Ghazi Town
5	Jamshaid Town	6	Ameen Park	7	Mehboob Town	8	Ali Town
9	Chak No-248 GB	10	Raja Town	11	Allahabad	12	Fruit Market
13	Gulshan Town	14	Aftab Town	15	Waqar Town	16	Raza abad
17	Chak No- 239 GB	18	Hussain Nagar	19	Muhammad pura	20	Gujjar Town
21	Ismailabad	22	Muslim Town	23	Mughalpura	24	Shaukatabad
25	Chak No-240/GB						

9.3. Sewerage

9.3.1. Coverage

The coverage of the sewerage system is 60% of the total city area. In most of main streets and roads main sewers have been laid but lateral sewers in the streets have not been laid. On some of the main roads, gravity flow sullage carriers have been constructed to tap the water from the surface drains. These sullage carriers have enough sections to take the storm water as well but in dry weather these sullage carriers take the dry weather flow from the streets. The coverage map is as under:



9.3.2.Existing Disposal Works & Pumping Stations

The detail of each pumping station already working in the city is given below:

Location	Collecting tanks	No. of pumps	Discharge each (cusecs)	Total discharge (cusecs)	Motor BHP	working status	Force main/S. Carrier			Ultimate disposal
							Size (inch)	Length (ft)	Condition	
Housing colony	2	3	2.0	4.0	30	Poorly working	3'x3'	5000	Poor	Broad irrigation/Seepage drain
			1.5	1.5	25					
Muhammad Ali Park	1	2	1.5	1.5	25	Poorly working	3'x3'	3000	Good	Seepage Drain
			1.0	1.0	15					
240 More	2	2	2.5	5.0	40	Yes	18"	200	Good	Seepage Drain
		1	3.0	3.0	55	Yes				
		1	2.0	2.0	30					
Chak No. 128 GB	2	2	1.50	3.0	25	Yes	2'x2'	2000	Needs repair	Broad irrigation/Seepage drain

9.3.3.Sullage Carrier or Open Channels

Under mentioned sullage carriers collect water from the surface drains and discharge in the main sewer of disposal works. All of these need repairs.

Location of disposal works	Repair of Sullage Carrier	
	Section (feet)	Length (feet)
Kachi abadi To Melad Chowk	2.5'x2.5'	4,000
Lakkar Mandi To Lahore road Phatak	6'x 6'	3,500
Lahore road Phatak to 240 more	8'x 8'	3,000
Defense road railway crossing To 240 More	4'x 4'	4,000
Altaf town to Faisal town	3'x 3'	2,500

9.3.4.Manpower Deployed

The manpower deployed presently for the operation & maintenance of the system is given below against the total regular sanctioned strength of 4 persons. Sanitary workers are being used for operation & maintenance of the sewerage system.

Pump Operators	6
Baildars	0
Supervisors	0
Sewer men	10
Total	16

9.3.5. Tariff Structure

All the sewer connections are not being charged by this time. However, MC Jaranwala notified the sewerage tariff in March 2018. As per gazette sewerage fee is Rs 100 per connection per month but this is not being recovered by MC.

9.3.6. Service Delivery

- As stated earlier, the sewerage system is working in 60% area of the city through main and branch sewers on main roads and streets but a very small area is equipped with lateral sewers.
- Most of the city is being served with surface drains discharging into the sewers without gulley grating chambers which is allowing all the silt and the floating materials in the sewers and is the main reason for chocking of sewer lines.
- No effective de-silting and cleaning of sewers is being done due to shortage of staff and machinery. Hence the service delivery is very poor and lot of waste water flooding in above given parts of the city, is being observed giving loss to public as well as private property.

9.4. Streetlight

9.4.1. Street lights Existing Situation:

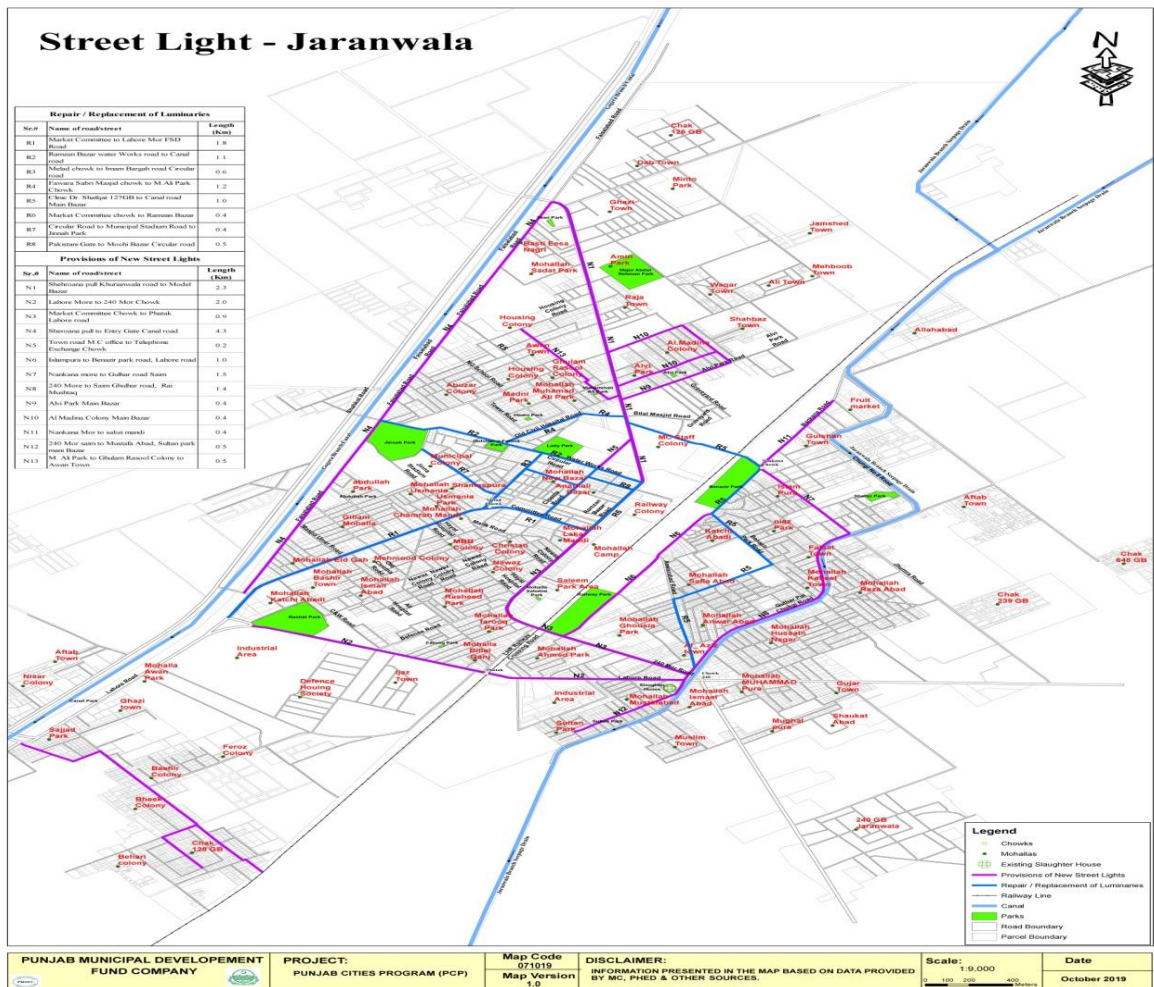
Street light facility is available only on the under mentioned roads in the city:

Sr. No.	Name of Road/ Street	Type of light (Led/sodium)	Length (Km)
1	Market Committee to Lahore More FSD Road	Sodium	1.76
2	Ramzan Bazar Water Works roads to Canal Road	Sodium	1.09
3	Melad Chowk to Imam Bargah Road & Circular Road	Sodium	0.57
4	Fawara Sabri Masjid Chowk to M.Ali Park Park Chwok	Sodium	1.17
5	Clinic Dr. Shafqat 127 GB to Canal Road Main Bazar	sodium	1.0
6	Khurianwala Road to Housing, Abuzar Colony Main Bazar	Sodium	0.70
7	Civil Hospital Chowk to Islam Pura to 240 Moore	Sodium	3.0
8	Market Committee Chowk to Ramzan Bazar	Sodium	0.42

Sr. No.	Name of Road/ Street	Type of light (Led/sodium)	Length (Km)
9	Circular Road to Municipal Stadium Road to Jinnah Park	Sodium	0.40
10	Water Works road to Cinema Chowk Masjid Bazar	Sodium	0.57
11	Water Works Road to Fsd Road Neya Bazar	Sodium	0.57
12	Pakistani Gate to Mochi Bazar Circular Road	Sodium	0.50
13	Lahore road to circular road Madni Bazaar	Sodium	0.50
14	Lahore road to Gulistan Cinema road to Defense View road	Sodium	0.50
15	Jhumra Road Sasta Ramzan Bazar to Civil Hospital Chowk	LED	0.50
16	Lahore road phatak to Sugar Mill Phatak	LED	0.50

9.4.2. Street lights Coverage Map:

Street light installed in wards are as below:



9.4.3. Operation & Maintenance Expenditure:

MC Jaranwala spent under mentioned funds on the O&M of street light in the last 5 years:

(All figures in Million Rs.)

Year	2013-14	2014-15	2015-16	2016-17	2017-18
Total Expenditure	5.904	8.176	7.69	2.761	8.518
Revenue Earned	0	0	0	0	0
Subsidy Injected	5.904	8.176	7.69	2.761	8.518

10. Complaint Management

Municipal Committee Jaranwala has established a centralized complaint cell for complaints registration, its tracking and resolution. The primary objective of establishing complaint cell was to enhance MC's efficiency in addressing citizens' and building confidence of citizens.

The complaint cell has been provided with telephone line to facilitate the complaint registration over the phone without walking in to the office. Every complaint, whether received in writing or verbally, is recorded in the software by a designated complaint cell incharge. Each recorded complaint generates a unique number already printed on the complaint slip. The complainant also receives the complaint number for the follow up, if required. Once the complaint is resolved by the relevant staff, he returns his part of the complaint slip to the complaint cell with his remarks and the complaint cell in charge updates the status of complaint in the software accordingly. The complainant may inquire the status of his complaint at any time just by calling the complaint registration office with reference to his complaint number. This process ensures the registration and tracking of all the complaints, thus keeping MC staff accountable to the MC management as well as the citizens.

Complaints: Received Summary Year – 2018-19	
Sector	Complaints
Water Supply	7%
Sewerage and Drainage	40%
Streetlight	3%
Solid waste	49%
Miscellaneous	1%



11.MC Website (www.mcjaranwala.lgpunjab.org.pk)

Municipal Committee Jaranwala has also developed its website for dissemination of information for general public. The information contain all major categories of information for citizen's interest like information about the officers with their telephone numbers, budget detail, Development projects, news and events etc.

The screenshot shows the website for Municipal Committee Jaranwala. The header includes the MC logo and the text 'Municipal Committee Jaranwala'. Below the header is a navigation menu with links: 'About Jaranwala | Maps | Wards | Complaints | Contact Us'. The main content area starts with a 'Welcome' section, followed by a paragraph of text: 'Jaranwala is about 400 years old city. There was a well with big roots hanging in it of an old willow tree. In Punjabi language roots are called "Jaraan" and place is called "Wala". So, these both words combined and formed the shape of a name "Jaranwala". By the passage of time, the place called Jaranwala and later on this name became famous and the city was also called Jaranwala. Existing city was founded by British government in 1908. Mr. Micheal Ferrar deputy commissioner of Faisalabad has inaugurated this town in 1909. Rai Ahmad Khral and Bhagat Singh two famous freedom fighters were sons of historic city of Jaranwala. Mian Abdul Bari a freedom fighter and President of All India Muslim League District Paghwara And Then Lyallpur district was settled in Jaranwala after partition. Jaranwala is an agriculture based city. Major crops in this area are sugarcane, wheat, corn and rice. Jaranwala hosts the 3rd largest jute mill in the world (it is closed now a days). The city of Jaranwala shares in growth of Pakistan with sugar, chemical, textile, wheat and rice industry. Surroundings of Jaranwala are also famous for its dairy products.'

The sidebar on the left contains several menu items: 'Administrative Setup', 'MC Functions', 'Policies & Procedures', 'Development Projects', 'Public-Private Partnership', 'Budget', 'Notices & Tenders', 'Downloads', 'Events', 'Service Delivery Detail', 'Online Software', 'Performance Management System', 'Complaint Tracking System', and 'Advertisement'. At the bottom of the sidebar is a Facebook link: 'Find us on facebook'. There is also an advertisement placeholder with a question mark.

On the right side, there is an 'Administrator Message' section with a photo of a man and a 'NEWS' section with a headline: 'Government of Punjab has established new local government system under the Punjab Local Government Act (PLGA) 2013 after dissolving PLGO 2001. The Administrator and Vice Administrator have joined their offices and new local government system has started functioning.'

12.MC Response to the Requests of Citizens under RTI Act 2013

No request received from any citizen during the current year.

**SUMMARY OF RESPONSE TO CITIZENS REGARDING RTI REQUESTS
(2018-19)**

MC Section	No. of Requests Received	No. of Requests Attended	Average No. of Days/ Time span to Attend Request	No. of Requests Refused/ Not Fit for Sharing Information	No. of Requests Forwarded to Other Departments for Seeking Information	Total No. of Requests In Progress	Total No. of Requests Pending	Citizen's Satisfaction Feedback	Remarks
Chief Officer	x	x	x	x	x	x	x	x	x
MO (I&S)	x	x	x	x	x	x	x	x	x
MO (F)	x	x	x	x	x	x	x	x	x
MO (P)	x	x	x	x	x	x	x	x	x
MO (R)	x	x	x	x	x	x	x	x	x
Total	x	x	x	x	x	x	x	x	x

Human Resource Detail

MC Name: Jaranwala

Section Name	Name of Post	BPS	Vacancy detail(No.)			Service Type(No.)			Recruited at		Remarks
			Sanctioned	Filled	Vacant	Permanent	Contractual	Daily wager	MC	Provincially	
Chairman	Chairman	Fixed	1	1	0	1	0	0			
	Junior Clerk	11	1	1	0	1	0	0	✓		
	Naib Qasid	1	1	1	0	1	0	0	✓		
Vice Chairman	Vice Chairman	Fixed	1	1	0	1	0	0			
	Junior Clerk	11	1	1	0	1	0	0	✓	□	
	Naib Qasid	2	1	1	0	1	0	0	✓		
Chief Officer	Chief Officer	17	1	1	0	1	0	0		✓	
	Senior Clerk	14	1	1	0	1	0	0	✓		
	Computer Operator	12	1	0	1	0	0	0	✓		
	Assistant	11	1	1	0	1	0	0	✓		
	Junior Clerk	11	1	1	0	0	1	0	✓		
	Driver	5	1	0	1	0	0	0	✓		
	Naib Qasid	3	1	1	0	1	0	0	✓		
	Sanitary worker	3	1	1	0	1	0	0	✓		
	Bulavi	3	1	1	0	1	0	0	✓		
	Naib Qasid	2	1	1	0	1	0	0	✓		

Section Name	Name of Post	BPS	Vacancy detail(No.)			Service Type(No.)			Recruited at		Remarks
			Sanctioned	Filled	Vacant	Permanent	Contractual	Daily wager	MC	Provincially	
MO-Planning	Municipal Officer Planning	17	1	0	1	0	0	0		✓	
	SSE/ Building Inspector	14	1	0	1	0	0	0		✓	
	Senior Clerk	14	1	1	0	1	0	0	✓		
	Assistant	11	1	1	0	1	0	0	✓		
	Junior Clerk	11	1	1	0	1	0	0	✓		
	Driver	5	1	0	1	0	0	0	✓		
	Naib Qasid	1	1	1	0	1	0	0	✓		
MO- Finance	Municipal Officer (Finance)	17	1	1	0	1	0	0		✓	
	Tax Superintendent	16	1	1	0	1	0	0	✓		
	Accountant	14	1	0	1	0	0	0		✓	
	Senior Clerk	14	1	1	0	1	0	0	✓		
	Senior Clerk	14	1	1	0	1	0	0	✓		
	Recovery Clerk	14	1	1	0	1	0	0	✓		
	Pension Clerk	14	1	1	0	1	0	0	✓		
	Inspector	11	1	1	0	1	0	0	✓		
	Inspector	11	1	1	0	1	0	0	✓		
	Accounts Clerk	11	1	1	0	1	0	0	✓		
	Recovery Clerk	11	3	3	0	3	0	0	✓		
	Daftri	4	1	1	0	1	0	0	✓		
Naib Qasid	3	1	1	0	1	0	0	✓			

Section Name	Name of Post	BPS	Vacancy detail(No.)			Service Type(No.)			Recruited at		Remarks
			Sanctioned	Filled	Vacant	Permanent	Contractual	Daily wager	MC	Provincially	
MO-Regulation	Municipal Officer Regulation	17	1	0	1	0	0	0		✓	Additional Charge with CO
	Inspector	11	1	1	0	1	0	0	✓		
	Junior Clerk	11	3	3	0	2	1	0	✓		
	Patwari	9	1	0	1	0	0	0	✓		
	Driver	5	1	0	1	0	0	0	✓		
	Naib Qasid	3	1	1	0	1	0	0	✓		
	Legal Advisor	Fixed	1	1	0	1	0	0	✓		
	Superintendent Slaughter House	Fixed	1	1	0	1	0	0	✓		
MO-Insrastructure	Municipal Officer (Infrastructure)	17	1	1	0	1	0	0		✓	
	Head Clerk	16	1	1	0	1	0	0	✓		
	Senior Sub Engineer	16	1	1	0	1	0	0		✓	
	Senior Clerk	14	1	1	0	1	0	0	✓		
	Junior Clerk	11	1	1	0	1	0	0	✓		
	Sub Engineer	11	2	2	0	2	0	0		✓	
	Garden Superintendent	14	1	0	1	0	0	0	✓		
	Computer Operator	12	1	0	1	0	0	0	✓		
	Draftsman	11	1	1	0	1	0	0	✓		
	Assistant	11	1	1	0	1	0	0	✓		

Section Name	Name of Post	BPS	Vacancy detail(No.)			Service Type(No.)			Recruited at		Remarks
			Sanctioned	Filled	Vacant	Permanent	Contractual	Daily wager	MC	Provincially	
	Assistant Drafts Man	7	1	0	1	0	0	0	✓		
	Sanitary Inspector	8	2	0	2	0	0	0	✓		
	Fire Superintendent	14	1	1	0	1	0	0	✓		
	Head Fireman	8	1	1	0	1	0	0	✓		
	Fireman	6	4	4	0	4	0	0	✓		
	Fireman	3	1	1	0	1	0	0	✓		
	Sanitary supervisor	6	2	2	0	2	0	0	✓		
	Sanitary supervisor	5	4	4	0	4	0	0	✓		
	Electrician	5	3	1	2	1	0	0	✓		
	Mechanic	5	1	0	1	0	0	0	✓		
	Oil Man	4	1	1	0	1	0	0	✓		
	Fero Khalsi	3	1	1	0	1	0	0	✓		
	Road Ruler Cleaner	2	1	1	0	1	0	0	✓		
	Naib Qasid	1	1	1	0	1	0	0	✓		
	Road Quli	2	1	1	0	1	0	0	✓		
	Driver	6	1	1	0	1	0	0	✓		
	Tractor Driver	6	1	1	0	1	0	0	✓		
	Tractor Driver	5	10	0	10	0	0	0	✓		
	Driver	5	4	0	4	0	0	0	✓		

Section Name	Name of Post	BPS	Vacancy detail(No.)			Service Type(No.)			Recruited at		Remarks
			Sanctioned	Filled	Vacant	Permanent	Contractual	Daily wager	MC	Provincially	
	Disposal Driver	3	4	0	4	0	0	0	✓		
	Turbine Driver	5	2	2	0	2	0	0	✓		
	Turbine Driver	3	15	3	12	2	1	0	✓		
	Plumber	2	3	1	2	1	0	0	✓		
	Chowkidar	3	1	1	0	1	0	0	✓		
	Chowkidar	2	3	3	0	3	0	0	✓		
	Chowkidar	1	9	9	0	7	2	0	✓		
	Water Carrier	3	6	6	0	6	0	0	✓		
	Water Carrier	2	1	1	0	1	0	0	✓		
	Water Carrier	1	1	1	0	0	1	0	✓		
	Mali	2	10	2	8	0	2	0	✓		
	Baildar	3	3	3	0	3	0	0	✓		
	Baildar	2	3	3	0	3	0	0	✓		
	Baildar	1	17	7	10	2	5	0	✓		
	Sanitary worker	4	1	1	0	1	0	0	✓		
	Sanitary worker	3	33	33	0	33	0	0	✓		
	Sanitary worker	2	2	2	0	2	0	0	✓		
	Sanitary worker	1	209	11	198	0	11	0	✓		

Municipal Committee Jaranwala																		
Form AR-32 see Rule 42(1)(b)																		
Monthly Compilation Of Receipts																		
For The Financial Year 2018 - 2019																		
	Major Head	Minor Head	Detail Head	Head Title	Account Code	Jul	Aug	Sep	Oct	Nov	Dec	Jan	Feb	Mar	Apr	May	Jun	Total
1	Tax revenue	Direct taxes	Taxes on income	Income tax	B01101	36,980	171,775	41,580	70,775	76,285	62,451	154,540	129,505	167,895	139,850	206,020	6,275	1,263,931
2	-	-	Property tax	UIPT / Share of net proceeds assigned to Districts/TMAs etc.	B01302	-	-	-	-	-	-	266,475	-	2,380,844	-	2,749,539	-	5,396,858
3	-	-	-	TTIP / Tax on Transfer of Immovable Property	B01313	162,750	909,700	943,525	1,106,365	877,465	617,765	1,005,315	1,307,605	1,603,775	5,020,231	234,600	288,980	14,078,076
4	Non-Tax Revenue	Receipts from civil administration and other functions	Community services receipts	Building Rent	C02701	-	-	-	-	-	-	-	-	-	-	-	-	0
5	-	-	-	Collection of payments for services rendered (Staff Salary from Contractor)	C02705	-	-	-	-	-	-	-	-	-	-	-	13,090	13,090
6	-	Miscellaneous receipts	Economic services receipts Others	Car parking fee	C03555	-	960	-	-	-	5,150	-	3,150	-	-	-	-	9,260
7	-	-	Grants	Grant from Provincial Government PFC (Non Development)	C03683	-	-	14,135,887	28,271,774	-	-	28,271,774	-	28,271,774	14,135,887	14,135,887	28,271,774	155,494,757
8	-	-	Others	Collection of payments for service rendered	C03825	8,360	178,110	118,800	144,380	105,380	70,950	131,340	126,280	166,430	97,900	24,970	18,480	1,191,380
9	-	-	-	License fee (Profession Vacation & Trade)	C038800	-	-	10,000	-	-	-	-	-	-	-	-	-	10,000
10	-	-	-	License fee (Dangerous/Tire and Junk Yard)	C038800	5,000	30,400	10,600	61,600	66,000	224,500	227,000	52,200	32,900	73,790	26,000	52,500	862,490
11	-	-	-	Licence Fee (Animal Drawn Vehicles)	C038800	-	-	-	-	-	3,080	2,830	34,425	-	30,750	-	18,025	89,110
12	-	-	-	License fee - others	C038800	-	-	5,187	800	800	-	-	1,000	800	-	-	900	9,487
13	-	-	-	General Bus Stand fee	C038801	236,930	9,860	112,230	112,230	112,230	142,230	112,230	112,230	112,230	-	111,530	-	1,173,930
14	-	-	-	Wagon Stand fee	C038801	87,300	83,950	84,010	89,220	91,660	104,340	108,708	1,315,500	909,000	909,000	511,850	-	4,294,538
15	-	-	-	Car/Suzuki/ Pickup Stand fee	C038801	201,370	81,690	57,590	96,690	100,000	50,000	88,380	96,690	81,690	99,100	54,000	40,000	1,047,200
16	-	-	-	Riksha/Motorcycle/ Bicycle Stand fee	C038802	166,140	130,850	508,100	840	-	-	4,060	120,260	138,770	173,700	119,700	83,490	1,445,910
17	-	-	-	Tonga/ Rehra Stand fee	C038802	-	-	1,760	19,060	5,520	1,290	1,395	-	-	-	-	-	29,025
18	-	-	-	Fee from other Transport Stands	C038802	10,000	127,530	47,600	49,950	36,700	35,650	39,850	40,200	36,000	33,400	26,900	32,850	516,630
19	-	-	-	Fee for approval of Building/ Construction Plan	C038802	22,514	33,939	117,081	99,925	70,030	23,434	86,800	114,648	104,373	136,962	11,040	59,082	879,828
20	-	-	-	Fee for change in land use	C038802	-	-	221,369	340,923	195,716	539,963	114,342	494,033	339,218	597,640	-	378,161	3,221,365

MC Annual Report 2018-19

21	-	-	-	Conversion Fee for change in building	C0388029	28,620	11,313	52,070	42,253	-	19,180	82,682	129,790	55,960	30,640	-	-	452,508
22	-	-	-	Fine for construction without approval of building plan	C0388030	10,800	-	4,100	8,880	-	-	117,024	55,740	4,320	13,776	4,050	71,501	290,191
23	-	-	-	Fine for Encroachments	C0388034	800	2,200	8,000	60,800	23,900	7,100	9,800	7,600	2,700	3,400	5,800	5,800	137,900
24	-	-	-	Rent/ Lease income of Slaughter House	C0388041	-	-	-	-	-	-	-	-	-	-	-	-	0
25	-	-	-	Fee for slaughtering of animals	C0388042	76,550	31,900	24,650	60,000	65,900	80,980	70,200	61,550	62,450	84,600	83,000	71,400	773,180
26	-	-	-	Sale of slaughter house waste	C0388043	-	-	-	-	-	6,300	3,800	6,750	14,050	-	-	4,150	35,050
27	-	-	-	Receipts on account of sale of water residential	C0388047	5,730	3,215	8,400	600	4,580	-	3,565	98,940	168,351	172,855	102,550	36,115	604,901
28	-	-	-	Receipts from public latrines	C0388056	8,650	1,760	5,400	8,510	6,850	10,760	12,570	24,565	14,625	14,625	14,625	-	122,940
29	-	-	-	Registration/ Enlistment of Contractors	C0388071	-	-	-	-	2,750	-	-	15,000	-	-	-	-	17,750
30	-	-	-	Contractor Advances/Deposits	C0388074	-	-	828,000	-	-	-	402,150	10,300	-	-	-	384,200	1,624,650
31	-	-	-	Advertisement Fee on billboards/ hoardings	C0388076	-	43,350	-	-	-	-	-	-	-	-	-	-	43,350
32	-	-	-	Advertisement Fee on sign boards of shops/ commercial places	C0388077	972,000	472,605	39,800	295,185	73,601	356,835	385,270	124,500	380,635	87,975	250,054	-	3,438,460
33	-	-	-	Arrears of Shop	C0388079	-	-	-	-	-	-	-	10,000	-	-	-	-	10,000
34	-	-	-	Rent of municipal Property - Shops	C0388081	810,775	417,814	235,811	425,110	616,239	572,630	496,220	432,330	796,604	485,228	446,682	430,780	6,166,223
35	-	-	-	Rent of municipal Property - municipal urban land	C0388083	-	-	-	-	14,220	-	-	7,750	-	-	5,580	-	27,550
36	-	-	-	Other rents	C0388085	28,696	41,630	3,669	42,432	55,320	41,007	47,578	38,330	20,669	42,837	43,465	27,632	433,265
37	-	-	-	Road cutting charges	C0388086	3,900	8,588	126,550	6,250	3,770	314,056	3,164	3,143	3,099	-	-	-	472,520
38	-	-	-	Copying fee	C0388087	30,440	70,000	30,220	150,220	83,500	45,000	102,500	64,270	54,600	56,820	43,800	10,000	741,370
39	-	-	-	Sale of stocks and stores	C0388090	-	-	-	-	-	-	336,000	-	-	-	-	-	336,000
40	-	-	-	Others Miscellaneous Fee	C0388091	80	65,500	20,100	19,100	13,650	17,850	25,200	19,900	18,900	-	360	64,900	265,540
41	-	-	-	Arrears of Water Rate (commercial)	C0388094	-	-	-	-	-	-	-	-	-	-	1,260	-	1,260
42	-	-	-	NOC Fee	C0388096	2,500	7,720	3,500	2,500	1,500	52,000	2,500	4,500	1,500	500	-	500	79,220
43	-	-	-	Miscellaneous Arrears	C0388098	-	-	-	-	-	-	-	-	-	-	360	360	720
44	-	-	-	Birth Certificate	C03881	-	700	-	-	-	-	-	-	-	-	-	-	700
45	-	-	-	Death Certificate	C03882	-	800	-	-	-	-	-	-	-	-	-	-	800
46	-	-	-	Marriage Certificate	C03883	-	300	-	-	-	-	-	-	-	-	-	-	300
47	Capital recovery of investment	Investment Receipts		Receipts from investment of Cash Balance by Local Govts (Bank Profit)	E01305	2,279,473	12,462	16,393	12,210	6,603	498	2,310,632	7,258	2,352	-	169	-	4,648,050
48	-	Recoveries of Loan and Advances	From government servants	House building advance	E02501	7,000	-	7,000	20,000	49,000	25,000	-	28,000	14,000	80,000	40,000	49,000	319,000
Total:						5,203,358	2,950,621	17,828,982	31,618,582	2,759,169	3,429,999	35,025,894	5,097,942	35,960,514	22,521,466	19,253,791	30,419,945	212,070,263

Municipal Committee Jaranwala

Form AR-30 see Rule 42(1)(a)

Monthly Compilation Of Expenditure

For The Financial Year 2018 - 2019

	Head Title	Account Code	Jul	Aug	Sep	Oct	Nov	Dec	Jan	Feb	Mar	Apr	May	Jun	Total
1	Basic Pay Officers	A01101	-	-	-	183,110	-	103,055	14,781	218,590	-	136,640	212,119	-	868,295
2	Personal pay Officers	A01102	-	-	-	-	-	13,800	1,781	-	-	-	2,968	-	18,549
3	Basic Pay Staff	A01151	2,167,893	2,040,472	2,632,976	4,275,016	4,504,650	3,397,577	71,770	2,285,881	4,661,856	6,067,580	5,877,177	3,586,362	41,569,210
4	Personal pay Staff	A01152	-	-	-	-	-	-	1,243,850	2,415,036	-	97,420	-	-	3,756,306
5	House rent Allowance	A01202	-	-	51,369	167,497	-	167,449	5,291	157,997	145,748	217,066	251,862	13,619	1,177,898
6	Conveyance Allowance	A01203	-	-	69,130	449,677	-	432,522	3,095	426,544	391,052	571,836	683,646	49,890	3,077,392
7	Washing Allowance	A01207	-	-	-	700	-	700	-	700	700	1,040	1,100	-	4,940
8	Special Additional Allowance	A01209	-	-	-	-	-	12,000	-	-	34,651	24,974	20,491	-	92,116
9	Medical allowance	A01217	1,500	-	57,825	16,500	-	31,419	787	26,818	10,500	16,500	16,312	47,230	225,391
10	Fixed contingent/stationary allowance	A01218	-	251,040	-	-	-	-	-	-	-	-	-	-	251,040
11	Special compensation allowance	A01229	-	-	-	-	-	-	-	-	-	1,000	-	-	1,000
12	Unattractive area allowance	A01233	-	-	-	-	-	-	-	-	-	244,528	-	-	244,528
13	Special allowance	A01239	-	-	1,000	-	-	1,000	-	3,000	13,000	13,000	-	-	31,000
14	Special travelling allowance	A01243	-	-	-	-	-	-	-	-	-	-	5,885	-	5,885
15	Adhoc relief (2016) 10%	A0124407	1,454	-	53,495	209,701	-	209,559	6,984	197,702	179,541	254,953	317,649	27,317	1,458,355
16	Adhoc relief (2017)	A0124408	1,780	-	66,149	258,145	-	265,242	8,833	250,420	226,955	321,003	401,887	34,949	1,835,363
17	Adhoc relief (2018)	A0124409	-	-	66,149	258,145	-	265,242	8,833	250,420	227,038	324,770	402,020	34,949	1,837,566
18	Personal Allowance	A01254	-	-	-	-	-	-	-	10,463	1,040	-	3,000	-	14,503
19	Integrated Allowance	A01255	-	-	13,016	17,175	-	16,476	-	17,210	13,952	30,700	26,905	450	135,884
20	Other	A01270	450	-	-	-	-	-	-	-	-	-	-	-	450

21	Overtime allowance	A01271	-	-	185,891	115,501	-	40,584	62,927	20,904	12,197	40,965	-	-	478,969
22	Honoraria	A01273	-	-	-	75,000	-	36,774	-	45,000	-	2,276,470	-	32,810	2,466,054
23	Honoraria (Counselors Chairman Mayer)	A01273	-	-	-	-	-	-	-	95,500	-	-	-	-	95,500
24	Leave salary	A01278	-	-	-	-	291,720	-	-	-	-	-	-	-	291,720
25	Income Tax	A01301	-	-	-	-	-	-	-	-	-	446,915	2,373,130	-	2,820,045
26	Legal fees	A03102	-	-	15,000	-	-	-	-	15,000	15,000	15,000	15,000	-	75,000
27	Postage and telegraph	A03201	-	-	7,240	-	3,000	-	-	-	-	-	-	-	10,240
28	Telephone and trunk call	A03202	12,420	10,755	10,891	-	11,078	-	23,970	9,681	10,764	36,353	12,625	12,197	150,734
29	Courier and pilot service	A03205	-	-	-	-	-	-	-	-	3,500	-	-	-	3,500
30	Gas	A03301	-	-	-	-	46,542	-	-	-	-	-	-	-	46,542
31	Water	A03302	-	-	-	-	-	-	53,305	243,032	17,246	-	381,759	-	695,342
32	Electricity	A03303	-	-	-	-	-	-	92,704	73,196	55,026	57,983	-	26,266	305,175
33	Hot and cold weather charges	A03304	-	-	-	10,410	2,160	-	-	-	-	-	-	-	12,570
34	Rent of Machine & Equipment	A03408	-	-	-	83,375	-	-	49,275	-	94,900	-	-	-	227,550
35	Travelling allowance	A03805	-	-	31,115	4,740	14,530	12,540	27,070	23,065	12,480	16,245	70,570	104,603	316,958
36	P.O.L Charges, Aeroplanes, Helicopters, Staff Cars, Motor Cycles	A03807	-	-	-	-	-	-	48,958	-	-	-	-	-	48,958
37	Fixed Travelling allowance	A03825	-	-	-	-	-	-	-	-	-	4,825	-	-	4,825
38	Stationery	A03901	-	21,235	15,888	4,410	30,878	-	4,000	8,540	11,583	5,560	5,420	9,570	117,084
39	Printing and publication	A03902	-	-	-	-	42,459	-	-	-	-	14,040	-	-	56,499
40	Newspapers periodicals and books	A03905	-	735	4,035	-	810	-	3,915	1,040	5,020	1,460	6,060	-	23,075
41	Exhibitions, fairs and other national celebrations	A03918	-	69,050	347,800	-	122,500	-	124,458	86,230	33,000	3,350	-	-	786,388
42	Cost of Other Stores	A03942	-	138,300	21,000	-	318,980	-	-	-	-	63,750	-	-	542,030
43	Advertising / Publicity & Dengue	A03966	-	33,200	-	-	9,000	-	9,450	-	95,981	-	-	43,985	191,616
44	Photo Copy Exp	A03967	-	2,988	14,530	1,606	6,544	-	18,662	9,603	15,000	2,444	8,434	1,470	81,281

45	Others	A03970	-	885,421	17,800	29,800	14,250	-	4,410	2,800	3,500	11,700	-	-	969,681
46	Sports	A03971	-	-	521,550	24,000	-	-	-	-	42,000	85,000	-	-	672,550
47	Share of Nadra Office	A03973	-	-	66,600	-	-	-	60,000	-	102,300	39,660	-	-	268,560
48	Water Testing Sample Exp	A03974	-	-	-	22,400	-	-	-	-	-	-	-	-	22,400
49	Pension	A04101	1,196,200	1,627,850	-	6,423,242	-	13,567	490,552	2,213,951	2,448,883	7,304	2,831,591	-	17,253,140
50	Gratuity	A04103	-	-	-	397,285	-	-	-	-	-	-	-	1,043,832	1,441,117
51	Other pension (e.g. family pension)	A04104	-	-	-	-	-	-	-	-	-	-	2,217,997	-	2,217,997
52	Payment of Pension Contribution of Ex- Employees	A04110	-	-	-	-	-	4,789,819	-	1,804,238	-	7,287,155	-	-	13,881,212
53	Superannuation Encashment of LPR	A04114	-	-	237,000	-	-	-	-	-	-	-	-	-	237,000
54	SSB Social Security Benefit	A04115	-	-	12,033	72,102	-	73,908	-	69,863	62,304	97,708	132,072	-	519,990
55	Pension Contribution (LCS/Non LCS)	A04120	7,120	-	242,885	807,264	-	824,371	-	721,385	680,815	740,751	1,265,513	1,078,208	6,368,312
56	Financial Assistance for in-service death of employee	A04171	-	-	-	1,600,000	-	-	-	-	-	-	-	-	1,600,000
57	Advance & Deposit	A07134	-	-	-	-	-	-	-	-	-	-	-	305,185	305,185
58	House building Advances	A08101	-	-	75,000	200,000	40,000	225,000	200,000	140,000	-	-	-	-	880,000
59	Hardware	A09201	-	-	2,070	-	6,000	-	-	3,120	18,850	-	-	-	30,040
60	Others	A09470	-	26,200	152,650	191,976	67,500	-	-	-	7,750	-	-	-	446,076
61	Purchase of Plant and Machinery	A09601	-	54,302	29,251	-	28,665	-	37,830	64,897	111,477	107,375	392,115	167,725	993,637
62	Purchase of Furniture and Fixture	A09701	-	-	9,500	-	-	-	-	-	-	-	-	-	9,500
63	Purchase of Other Assets	A09802	-	45,450	118,150	-	-	-	-	145,350	48,600	90,600	20,000	160,765	628,915
64	Transport (Repairs) Official Staff Cars, Motor Cycles	A13001	-	-	81,610	96,898	93,610	-	192,786	118,575	58,950	64,980	31,088	17,230	755,727
65	Machinery and Equipment (Repairs)	A13101	-	-	31,050	41,650	13,500	-	54,850	26,580	36,730	80,880	279,408	-	564,648
66	Repair and Maintenance Office Generator	A13102	-	-	-	-	-	-	-	-	-	-	-	-	0
67	Repair and Maintenance Water Supply Generator	A13103	-	-	-	-	-	-	-	-	-	-	7,200	-	7,200
68	Repair and Maintenance Sanitation Disposal Generator	A13105	-	-	-	-	-	-	18,730	-	33,440	19,000	-	-	71,170

69	Repair and Maintenance (Ramadan/Sunday Bazaar) Generator	A13106	-	-	-	-	-	-	-	-	-	-	-	98,550	98,550
70	Repair and Maintenance of Others	A13199	-	-	-	-	-	6,050	3,800	15,000	-	-	-	-	24,850
71	Furniture and Fixture (Repairs)	A13201	-	-	-	-	-	-	-	-	-	-	22,500	22,500	
72	Works - Urban (Repairs)	A13305	-	23,350	47,510	-	-	798,185	167,819	-	99,099	180,745	-	1,316,708	
73	Works - Urban Electrification (Repairs)	A13306	-	10,600	-	-	-	307,925	10,600	-	-	-	-	329,125	
74	Others - Repair and Maintenance of Buildings and Structures	A13370	-	-	764,622	902,412	-	606,519	-	2,517,988	1,468,256	-	-	6,259,797	
75	Others drainage (Repairs)	A13570	-	-	-	-	-	-	-	48,100	-	-	-	48,100	
76	Others General (Repairs)	A13870	-	-	-	26,125	-	-	-	-	-	-	-	26,125	
77	POL Official Staff Cars, Motor Cycles	A15101	-	-	139,650	19,434	65,763	-	-	28,702	-	-	62,510	316,059	
78	POL Vehicles for Municipal Services	A15102	-	-	-	-	-	40,998	-	-	40,567	36,650	-	118,215	
79	POL for Fire brigade	A15103	-	-	12,768	-	-	-	-	-	-	-	-	12,768	
80	POL for Street Watering/Lorry	A15104	-	-	112,370	45,640	-	-	-	43,330	-	56,050	-	257,390	
81	POL for General Use Vehicle/Truck/Trolley	A15105	-	-	959,729	533,667	147,255	480,955	44,540	53,845	479,567	444,372	42,985	3,186,915	
82	POL for Office Generator	A15106	-	-	88,810	45,640	-	58,095	-	32,190	-	33,630	-	258,365	
83	POL for Sanitation D-Watering Generator	A15108	-	-	-	-	-	69,178	-	409,188	-	-	-	478,366	
84	POL for Sanitation Disposal Generator / Machinery	A15109	-	-	323,555	148,455	-	-	-	-	199,489	49,207	-	720,706	
85	Electricity (Office)	A15201	66,149	-	-	197,577	-	36,816	-	-	-	-	75,973	376,515	
86	Electricity (Sub-Office)	A15202	25,366	-	-	-	-	-	-	-	-	-	-	25,366	
87	Electricity (Street Light)	A15203	420,743	-	-	1,012,132	-	492,890	-	921,273	821,019	743,025	2,628	879,128	5,292,838
88	Electricity (Water Supply)	A15204	469,077	-	480,522	466,379	-	309,748	-	-	-	540,378	-	2,266,104	
89	Electricity (Filtration Plant)	A15205	48,297	-	45,558	300,378	-	18,766	-	20,791	24,105	48,832	23,937	57,305	587,969
90	Electricity (Disposal Works)	A15206	431,369	-	87,017	673,899	-	293,620	-	485,778	891,128	380,667	98,242	314,865	3,656,585
91	Electricity (Parks)	A15207	253,199	-	18,317	258,277	-	240,563	-	-	-	-	-	296,387	1,066,743
92	On going schemes ADP (Previous year)	A16304	-	-	-	-	-	-	-	-	-	551,079	-	551,079	
93	Others	A16399	-	-	-	99,861	-	-	-	-	-	242,087	-	341,948	
94	Pension Fund Liability	G04101	-	-	-	-	-	-	-	-	572,854	145,079	-	717,933	
95	Contractors Security & Reimbursement	G04201	-	-	-	-	-	-	-	729,338	2,229,735	-	-	2,959,073	
96	Income Tax deduction from contractors / suppliers	G12714	-	-	-	-	-	-	-	-	-	33,600	-	33,600	
97	PST (Punjab Sales Tax)	G12715	-	-	-	-	-	-	-	-	270,780	-	-	270,780	
Total:			5,103,017	5,240,948	8,342,076	20,767,201	5,881,394	12,974,233	4,707,076	14,379,647	15,980,410	27,436,404	18,757,234	8,648,815	148,218,455