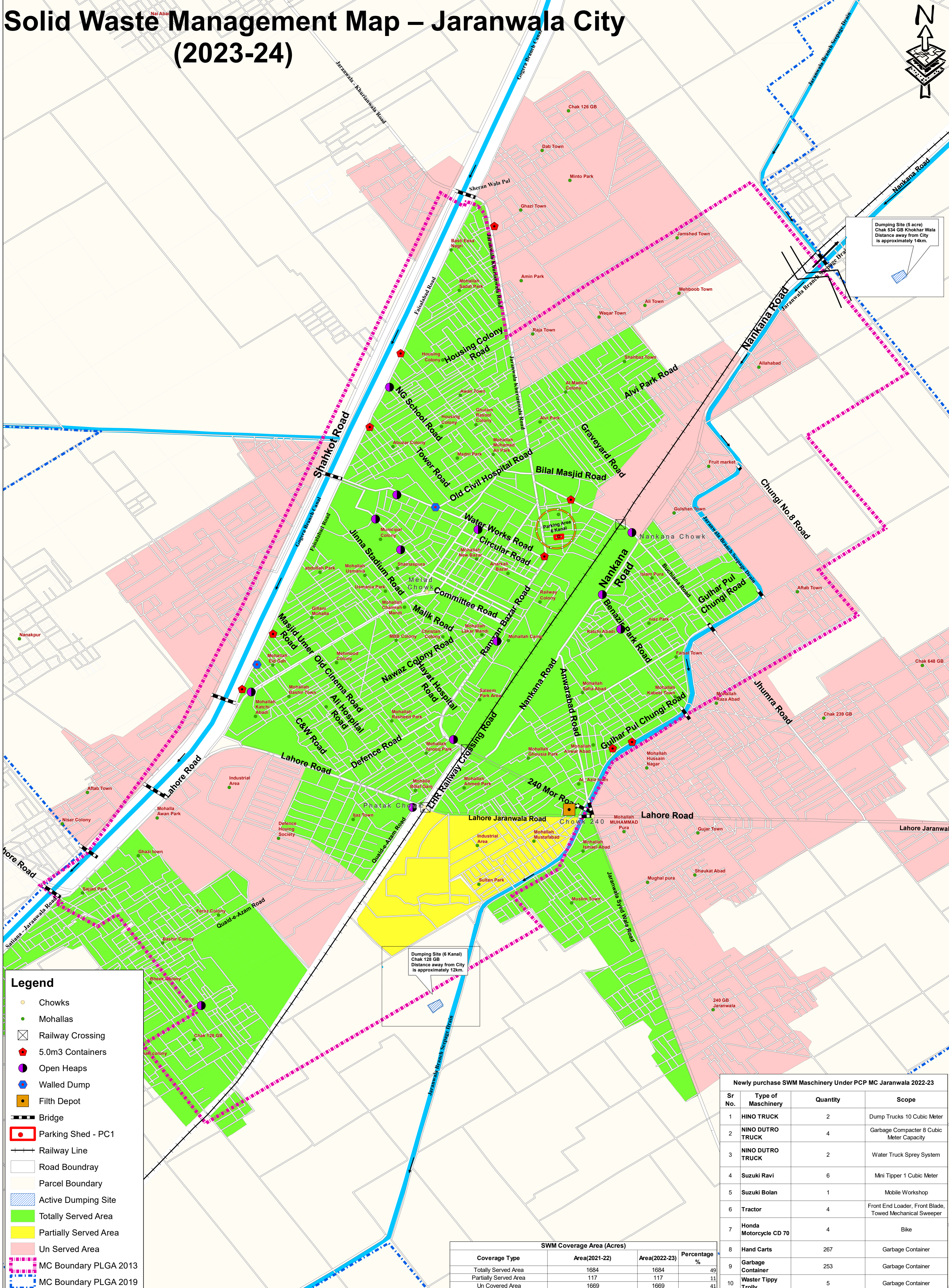
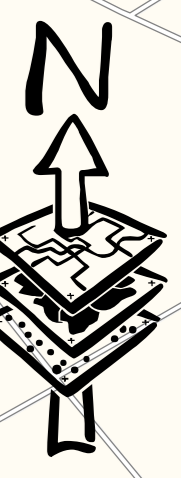


Solid Waste Management Map – Jaranwala City (2023-24)



- Legend**
- Chowks
 - Mohallas
 - ⊠ Railway Crossing
 - ⬠ 5.0m3 Containers
 - Open Heaps
 - Walled Dump
 - Filth Depot
 - ⚖ Bridge
 - ⊠ Parking Shed - PC1
 - ⚖ Railway Line
 - ▭ Road Boundary
 - ▭ Parcel Boundary
 - ▭ Active Dumping Site
 - ▭ Totally Served Area
 - ▭ Partially Served Area
 - ▭ Un Served Area
 - ▭ MC Boundary PLGA 2013
 - ▭ MC Boundary PLGA 2019

Dumping Site (6 Kanal)
Chak 128 GB
Distance away from City
is approximately 12km.

Dumping Site (5 acre)
Chak 534 GB Khokhar Wala
Distance away from City
is approximately 14km.

SWM Coverage Area (Acres)			
Coverage Type	Area(2021-22)	Area(2022-23)	Percentage %
Totally Served Area	1684	1684	49
Partially Served Area	117	117	11
Un Covered Area	1669	1669	41

Newly purchase SWM Maschinery Under PCP MC Jaranwala 2022-23			
Sr No.	Type of Maschinery	Quantity	Scope
1	HINO TRUCK	2	Dump Trucks 10 Cubic Meter
2	NINO DUTRO TRUCK	4	Garbage Compacter 8 Cubic Meter Capacity
3	NINO DUTRO TRUCK	2	Water Truck Sprey System
4	Suzuki Ravi	6	Mni Tipper 1 Cubic Meter
5	Suzuki Bolan	1	Mobile Workshop
6	Tractor	4	Front End Loader, Front Blade, Towed Mechanical Sweeper
7	Honda Motorcycle CD 70	4	Bike
8	Hand Carts	267	Garbage Container
9	Garbage Container	253	Garbage Container
10	Waster Tippy Trolly	5	Garbage Container